

The 2020-2021 Trout Fishing Season


Fish
& Game
NEW ZEALAND
Hawke's Bay Region

Features Inside:

- Lowland Fisheries
- What have we been up to?
- Remember to **CLEAN CHECK DRY**
- Angler Diary
- Call for Rangers
- Learn to fish workshops



Species monitoring

Staff have been carrying out a range of monitoring projects over the last year to provide useful information on our important fisheries. Amongst others, projects include; drift diving to capture information on fish numbers and density in the upper Ngaruroro and Mohaka Rivers, electric fishing to check on spawning success and recruitment of young trout in Central Hawke's Bay and the Esk catchment, and spawning surveys in the Tukituki and Esk catchments to provide data on when and where spawning takes place throughout the region.

Resource Management Act/Habitat Enhancement

Fish & Game are key advocates for trout habitat values in resource consenting processes and regional planning developments. We continue to engage with HBRC, district councils and Iwi over issues and opportunities that will effect the future of our fisheries.

Hawke's Bay Fish and Game also carry out 'Boots on the ground' habitat enhancement work and have facilitated funding of multiple wetlands over the last few years via the Gamebird Habitat Trust. Not only do these wetlands create opportunity for waterfowl hunting, but they can also act as effective nutrient and sediment filters and provide a

haven for native biodiversity.

Advice on wetland development is provided free of charge and native wetland plants raised in our nursery are provided at cost to licenceholders looking to develop or enhance wetlands and riparian areas on their properties.

Information to licence holders

Staff respond to email and phone enquiries and contribute to the special pre-season Fish & Game Magazine, as well as newsletters such as this one and monthly regional updates. Make sure that you add your email to you licence details to make sure you keep up to date with our monthly Reel Life newsletters throughout the season.

Maintaining Angler Access

Angler access signage is installed or replaced as necessary to keep anglers up to date where they can get to their favourite rivers. We also maintain a fishing hut for licenceholders on the Mohaka River at Glenfalls reserve and look to further develop access opportunities throughout the region.

Where new access opportunities arise, we negotiate with landowners on your behalf.

Junior/Novice Participation

In conjunction with Hastings Anglers club,

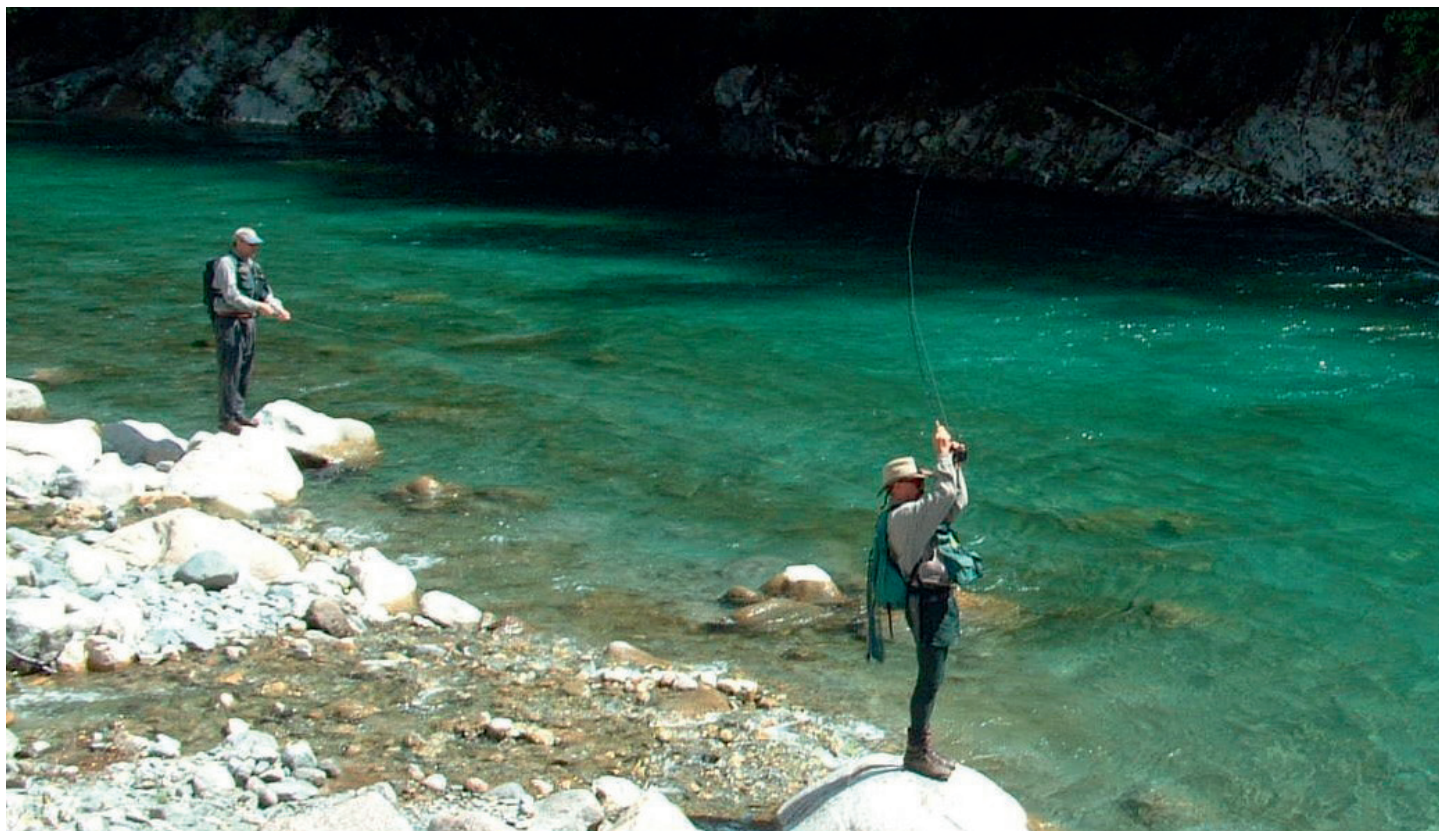
we continue to run introductory fly fishing courses at the Game Farm in Napier. These have included Junior, Novice, and Ladies classes. We also continue to run the annual kids fish out day with our experienced volunteers helping out with what is often a child's first fishing experience. Keep an eye out on our Facebook page to sign up for our spin-fishing courses later in the year!

Council Governance – having a say on your sport

The Fish & Game system gives hunters and anglers the chance to become elected to a Council and have a real influence on decision making and the direction of sports fish and game bird management throughout the region. Issues can be brought up in Council meetings that directly affect fishermen and hunters and ensure their interests are best looked after. Our Council meetings are also open to the public. If you are interested in putting yourself forward as a Councillor in the next election, coming to a few meetings beforehand can be a great way to see what it's all about!

Compliance

Staff and our team of honorary rangers are always out and about around the region checking that everyone is following the rules. We are also looking to expand the ranging team and are open to volunteer applications. See page 6 for more info.



Too often we anglers are attracted hours from home into the backcountry and the upper reaches of our favourite rivers, but we fail to remember we have great fishing right on our doorstep! While we all enjoy a picturesque backdrop and crystal-clear sight fishing, backcountry fisheries are also prone to pressure. Trout quickly learn what an angler looks like and become very spooked, requiring very delicate fishing.

The lower reaches of our main braided rivers might not be quite as attractive to look at but they are well worth exploring. Even though they are within a quick drive of major towns, they are generally empty of anglers. This can make fish much easier to hook compared to the back country.

We start our exploration with the Tutaekuri river near Taradale. The water flows between willow lined banks and has many still back waters; perfect habitat for rainbow trout. The runs are nice and fast with good slack water for fish to sit in. The time of year greatly affects the size and numbers of fish. Late summer through to Autumn is best for nice fat fish, with spring being better for numbers. Since this stretch often stays clean over winter, it can be well worth a look from June to October. If you want the best chance to find trout, cover lots of ground and fish the major willow lined pools. Any slack water can hold fish but near banks will hold the vast majority. This river has great nymphing water with some good spinning sections too. I most often catch my fish at the head of pools. 95 % of the time this is within 10cm of the bottom, so if you want to be in with a shot get your lure onto the gravel and keep it there as long as you can.

If you want lots of well-conditioned rainbow trout with the odd large brown mixed in, the place to go is the Tukituki River near Havelock North. This is one of the more popular areas of our lower reaches, but still doesn't get a huge amount of pressure. There are good fish present year-round, however springtime is when you want to be on the river. From



Fish in a Ngaruroro Backwater close to town

October through to December you will have a very good chance of tussling with a giant sea run brown or witnessing one of the stunning mayfly hatches in the late afternoon. The river has long stretches with little flow which then drop into fast runs, ending with large pools next to the willow lined banks. This cycle repeats itself again and again until reaching the mouth. There is a lot of water to be fished and I have found ignoring the featureless expanses to be a good tactic. The more time you fish the pools hard up against the willows, the more trout you will find. This applies to both spin and fly. The majority of the pools start quite shallow before dropping away into slow deep water. Target the heads of pools as fish tend to concentrate there. When the water is low, often the only place left for trout is in small pockets underneath the overhanging branches. I have had some awesome fun trying to extract these large wily fish. The last thing I have to say is if you see a log, treat it like a fish until you are certain it is isn't one. You don't want to miss

out on that double figure brown!

The Ngaruroro flows between Napier and Hastings and holds plenty of good fish a short distance from either centre. Even though it's close to town I rarely see other anglers. The river jumps from bank to bank with runs in between but doesn't have the long featureless water transitions like the Tukituki. Rainbows love to sit right on the edge of a drop-off and a well-placed spinner or nymph will often be irresistible to a hungry trout! Backwaters are especially abundant in the Ngaruroro and hold fish depending on how they have formed. If there is enough depth, shelter and cold water flowing in you will usually find more than one fish cruising. The diet of these fish mainly consists of water boatmen and other small insects found in still waters. Over the height of summer, backwaters hold more fish than anywhere else. They are perfect locations for fish to avoid heat while still enabling them to feed. Make sure to fish a long leader and cast well away from a fish since anything landed near them will send them panicking to deeper water. Let a fly or spinner sink and watch as a fish comes up to investigate. If you're lucky the fish will rush forward to inhale your offering. Sometimes a bit of encouragement is required, so if a fish turns away, a quick twitch can really spark a feeding reaction.

Overall fishing the lower reaches is very rewarding. It's accessible and often has higher catch rates than up higher on the rivers. I would fish these all year if the weather would cooperate!



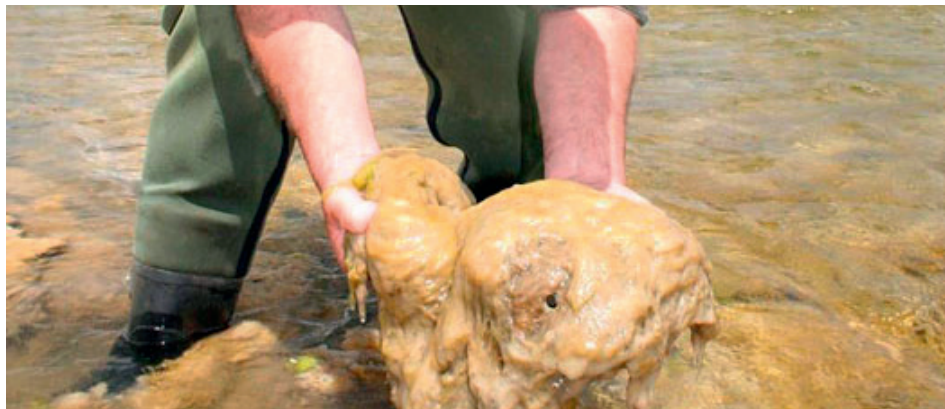
46 Pandora Road – Napier
Ph: 06 835 5651
Email: hb@hamillsnz.co.nz
Fishing & Hunting Specialist
since 1955

Still saying 'No' to Didymo!

With the Government heavily advertising domestic tourism in the wake of the Covid-19 pandemic, what better time could there be to have an adventure in our wonderful country and explore areas that you have never been before. When the warmer months return, we expect there to be lots of people on the move around the country between regions and islands. What better time to remind everyone to keep our waterways safe from unwanted pests. One we should all be familiar with is didymo!

It has been almost 17 years since didymo (*Didymosphenia geminata*) also known as 'Rock spot' was first discovered in a New Zealand river. Pest species like didymo can be spread by a single drop of water or fragment making it a huge risk to our sport!

Didymo can have a notable impact on a waterways' insect life and can form massive algal blooms. Monitoring and strict biosecurity has successfully contained the spread around the country and to this day, we have not had any discoveries of didymo in the North Island.

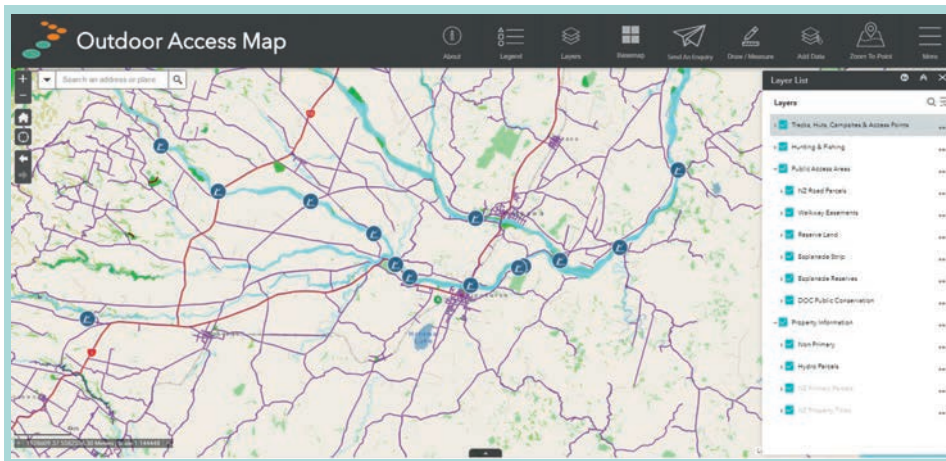


Part of this protection and success of containment has been self-enforced by anglers and other recreational users of our waterways so thank you everyone for playing your part!

F&G staff in conjunction with HBRC continue to work together to monitor our regions rivers for presence of didymo. Samples are taken from drift nets and sent

off to a laboratory for analysis. So far, the results have always come back negative.

You can do your part by remembering to CLEAN CHECK DRY between each waterway. At the Hawke's Bay office we have didymo packs with everything you need to keep this pest at bay. Call in when you are next passing by for your complimentary pack.



Walking Access Commission Website

Ever had doubts if that gravel track to the river is a public road? A very useful resource when looking for new spots to fish is the Walking Access Commission website. The New Zealand Walking Access Commission's purpose is to lead and support the negotiation, establishment, maintenance and improvement of walking access. This work benefits a wide range of people, especially our license holders!

The comprehensive national mapping system (WAMS – Walking Access Mapping System) shows colored lines over public roads (formed and unformed) using a range of base maps. The user can navigate around the country and zoom in and out on locations to find or confirm public access points to and alongside rivers and lakes.

It is worth visiting www.walkingaccess.govt.nz to get familiar with all the features it has to offer. It's an incredibly helpful resource for anglers and hunters which will only improve over time as more detailed information is added.

Napier Freshwater Anglers Club



Meets at Fish and Game H.B. Region
22 Burness Road, Greenmeadows,
Napier.....On the first Monday of each
month at 7.30pm

- Fly tying ■ Trips away
- Fishing huts ■ Social events
- Guest speakers ■ Stories and lies

Visitors and new members welcome!

Napier Freshwater Anglers Club...
Contact; President 027 784 4375
email; nfac.media@gmail.com

Staff have recently made the online electronic angling diary more user friendly. Anglers can submit their fishing information directly from their smartphone on the riverbank or their home computer once they return from their day's fishing. The information is automatically formulated into a spreadsheet and is available for staff to analyse. This project has been trialled and will only strengthen with input from more of our passionate anglers.

The information gathered will be used in conjunction with data obtained from other monitoring programmes to better understand the present state of the region's fisheries. The advantage of online angler diaries is they are relatively inexpensive to implement and gather a large volume of information on fish abundance, condition and angler use. In order to provide good data, we require information from reliable and motivated anglers that fish often and on a number of the region's rivers. Gathering a sample from a decent number of anglers throughout the region will enable us to monitor anglers' catch rates and the condition of fish. This will help guide the future management of these fisheries and is a great opportunity for anglers to be directly involved in the collection of angling data.



FISHING LICENCE OFFER!

Purchase your adult or family full season fishing licence in-store and go into the draw to win.

A mornings fishing with trout fishing extraordinaire Gary Harlen from
WILD TROUT ADVENTURES HAWKE'S BAY.



Hunting & Fishing Specialist!

108 Maraekakaho Road, Stortford Lodge, HASTINGS
(Opposite the Hastings Fire Station)

www.craftys.co.nz - sales@craftys.co.nz - Ph 06 878 2800

TERMS AND CONDITIONS APPLY- Winner will be notified on 02/11/2021.



Individual fishing information will be kept strictly confidential so that you can continue to keep your favourite fishing spots secret! If you are keen to assist, please register your interest by calling or emailing the office.



BETWEEN WATERWAYS

Traps for predator control

Hawke's Bay Fish & Game have been working to produce high quality predator traps for licence holders and those undertaking habitat enhancement and wetland development projects. These traps are supplied at cost to help with the fight against rats, cats and stoats.

The traps are built to last with both stainless and zinc plated trap mechanisms available, a 19mm H3.2 Treated Plywood box all finished off with galvanised mesh.

The following products are available for purchase from our office:

- DOC 200 with zinc coated mechanism (\$66.50)
- DOC 200 with stainless mechanism (\$80.50)
- Cat chimney traps with Timms trap mechanism (\$161.00)

If you require more information or would like to place an order for any of these products, please contact the office on 06 844-2460.



Could you be a Fish & Game Honorary Ranger?

Hawke's Bay Fish & Game have a small team of honorary rangers that assist with compliance and advocacy work. What exactly does this involve?

It means that you are given the responsibility to ensure anglers and hunters are abiding by the rules and are using the resource in accordance with the regulations.

Honorary rangers are an integral part of our team here at Hawke's Bay Fish and Game. By ensuring anglers and hunters comply with the regulations, rangers ensure there will be game birds and sports fish for future generations.



If you would like to join the ranging team, feel like you have good public relations skills and want to give back to your sport, contact the Hawke's Bay Fish and Game office to register your interest.

**HAWKES BAY'S
LARGEST RANGE OF FIREARMS**

GUN CITY + Fishing | **FIREARMS • FISHING • OUTDOOR**
2 PANDORA RD • PH (06) 833 6048 • OPEN 7 DAYS



BETWEEN WATERWAYS

Getting more people hooked on trout fishing in the Bay



The next introduction to fly fishing workshop is exclusively for ladies and to be held over two days.

Who is eligible: Ladies
(Over 18 years)

Where: Game Farm – Hawke's Bay Fish & Game, 22 Burness Road, Jervioistown, Napier

When: Saturday and Sunday
7th-8th November 2020,
9am- 3:30pm

Cost: \$50 (included materials)
Limited to 10

The course focuses on learning practical skills, having fun and learning all you need to know to go out on our local rivers and successfully catch fish. The workshop will include topics such as casting, tying knots, choosing flies and catch-and-release techniques amongst others.

Fish & Game staff plan to run spin fishing courses at the Game farm. Spin fishing is an easy to learn and productive method of trout fishing. Courses will be held in the evenings in early December (dates tbc) and topics will cover: reading the water, types of lures, casting, and catching/handling fish.

Keep connected by following us on Facebook. Get in touch with the Hawkes Bay Fish & Game office to register your interest.



Kids fish out day 2020

Fun was had by all at the 2020 Kids fish out day held at the Game farm on the 30th of August. The weather turned it on for us and over 50 kids got a taste of the sport and all went home with a fish!

It was not just fishing on offer. Children also got to practise casting with highly experienced local anglers, watch fly tying demonstrations and were shown how to clean and prepare their fish. The smokers were running nonstop, as was the BBQ making sure there were no hungry anglers in sight!

Many thanks go out to all our volunteers who made sure the day went off without a hitch! We couldn't have done it without you.

We saw some great fish landed by our young anglers on the day. The average weight/length caught was 3.5lb (1.61kg) and 488mm long.

The biggest fish of the day was caught by Olivia Sebileau (7), she landed this monster 8.75lb (3.97kg), 710mm Hen. Well done Olivia!

Hawke's Bay Fish & Game will look to hold another kids fish out day in March. This event will be advertised via Facebook.



Glenfalls Hut on the Mohaka River - Waitara Road

Glenfalls Hut is available to all licenceholders with a current whole season or family fish/game licence. Glenfalls is a great place to introduce the young ones to fishing during the school holidays!

The hut is located above the DOC reserve alongside Waitara Road, 8 kms from SH5 and is available for hire at \$25.00 per night (sleeps four). Additional charge of \$5 per self-contained motorhome or tent.

Contact Hawkes Bay Fish & Game staff on 06844-2460 or email hawkesbay@fishandgame.org.nz for further details and to check availability.

Licence winners!

Congratulations to Tony Clegg and Simon Carrington for winning a free whole season licence. Tony and

Simon returned the tag and trout information from fish they caught at Lake Tutira. This put them in the draw for a free licence. This is an

annual competition so remember to pass this information on to Fish & Game to go in the draw for next season! Tight Lines!


LICENCE	FULL SEASON				NON-RESIDENT		PART SEASON			
	WHOLE SEASON	LOCAL AREA ⁴	LOYAL SENIOR ⁵	FAMILY ⁶	FULL SEASON	ONE DAY	ONE DAY	SHORT BREAK ¹	LONG BREAK ²	WINTER ³
Adult (Age 18+)	\$ 133	106	113	173	180	34	21	48	93	80
Junior (Age 12 - 17)	\$ 27				34	20	5			
Child (under 12)	\$ Free				34	20				
Requires specified start time						●	●	●	●	
Available as a plastic licence	●	●	●	●	OPTIONAL					●
Available as a receipt-only						●	●	●	●	
Available to non-residents					●	●				
Can apply for a backcountry licence	●	●	●	●	●					
Can be used anywhere in NZ ⁷	●		●	●	●	●	●	●	●	●
Can register as a Fish & Game elector	●	●	●	●						
Receives special edition of F&G magazine	●	●	●	●						

2020/21 SEASON

- 1 Short-break is for a consecutive three-day period
- 2 Long-break is for a consecutive nine-day period
- 3 Winter licence is available from 1 April to 30 September
- 4 Local Area is restricted to one named region
- 5 Loyal Senior requires those over 65 years of age to have held a Full Season licence for the last five seasons
- 6 Family is two resident adult spouses and children or grandchildren under 18 years of age
- 7 Other than the Taupo fishery which is administered by DoC. For a Taupo licence see www.doc.govt.nz

PLEASE NOTE

- NZ resident children under 12 on 1 October can fish for free but need a child licence (issued free).
- All licence categories are available online (www.fishandgame.org) and via retail agents using the agency online licensing facility.



Call in & see Jeremy, Jake and Euan for friendly expert advice

Free Socks worth \$19.90 with every Adult or Family Whole Season fishing licence purchased!!!

Check out our new range of Simms gear





Your specialist Fishing & Shooting store

106 Nelson Street South, Hastings www.riverstoranges.co.nz sales@riverstoranges.co.nz Ph. 06 878 7177

Hawke's Bay Fish & Game staff maintain a Facebook page to keep anglers and hunters up to date with our work and other items of interest. Staff hope to tap into the younger generation of anglers and hunters and help them get into the sport and be successful. Search for "Hawke's Bay Fish & Game" and click "Like" to receive regular updates.



Contact: Hawke's Bay Fish & Game
 PO BOX 7345
 Taradale, Napier, 4112
 Ph: (06) 844 2460 Fax: (06) 844 2461
 Email: hawkesbay@fishandgame.org.nz
0800 LICENCE 0800 POACHING

